



RESEARCH ARTICLE

# Exploring sustainable scenarios in debt-based social–ecological systems: The case for palm oil production in Indonesia

Julen Gonzalez-Redin , J. Gareth Polhill, Terence P. Dawson,  
Rosemary Hill, Iain J. Gordon

Received: 13 May 2019/Revised: 27 October 2019/Accepted: 29 October 2019/Published online: 5 December 2019

**Abstract** A debt-based economy requires the accumulation of more and more debt to finance economic growth, while future economic growth is needed to repay the debt, and so the cycle continues. Despite global debt reaching unprecedented levels, little research has been done to understand the impacts of debt dynamics on environmental sustainability. Here, we explore the environmental impacts of the debt-growth cycle in Indonesia, the world's largest debt-based producer of palm oil. Our empirical Agent-Based Model analyses the future effects (2018–2050) of power (im)balance scenarios between debt-driven economic forces (i.e. banks, firms), and conservation forces, on two ecosystem services (food production, climate regulation) and biodiversity. The model shows the trade-offs and synergies among these indicators for Business As Usual as compared to alternative scenarios. Results show that debt-driven economic forces can partially support environmental conservation, provided the state's role in protecting the environment is reinforced. Our analysis provides a lesson for developing countries that are highly dependent on debt-based production systems: sustainable development pathways can be achievable in the short and medium terms; however, reaching long-term sustainability requires reduced dependency on external financial powers, as well as further government intervention to protect the environment from the rough edges of the market economy.

**Keywords** Agent-based model · Debt · Ecosystem services · Palm oil · Social–ecological system · Sustainable development

**Electronic supplementary material** The online version of this article (<https://doi.org/10.1007/s13280-019-01286-8>) contains supplementary material, which is available to authorized users.

## INTRODUCTION

The current standard approach of a debt-based economy may seriously threaten both economic development and environmental sustainability (ICSU and ISSC 2015). Economic growth requires the accumulation of more and more debt, while future growth—fuelled by ever-increasing amounts of energy and resources—is needed to repay the debt (Daly 2011). Although decoupling economic growth from environmental pressures is at the heart of initiatives such as the Green Economy Initiative of UNEP, frameworks for achieving this goal are still in their infancy (UNEP, 2011). Thus, there is a need to advance the current fragmented and circumstantial evidence of the relationship between debt dynamics and environmental sustainability.

The debt–(un)sustainability relationship is highly noticeable in Southeast Asia, where more than \$45 billion (2010–2017) in credits have been lent by overseas banks to companies operating in different natural resource sectors (e.g. palm oil, timber, pulp and paper) (Forest & Finance 2016). The palm oil industry in Indonesia is particularly important, having borrowed more credit facilities than any other sector in the country to fund palm oil production (i.e. USD 9.4 billion), and more than any other palm oil industry in Southeast Asia (Forest & Finance 2016).

Analysing the relationship between debt and environmental sustainability in Indonesia is important because this country is a focal point for key trade-offs between climate change mitigation, biodiversity conservation, and food production. First, Indonesia is one of the world's top five Green House Gas (GHG) emitting countries; this is the main reason why Indonesia has set a goal to reduce its GHG emissions by 26% by 2020 (Paltseva et al. 2016). Second, tropical forests in Southeast Asia overlap with four of the world's distinct “biodiversity hotspots”, with

Indonesia having the highest plant species richness in the world (ICCT 2016). Finally, Indonesia is the world's biggest producer of crude palm oil (CPO), and in 2015 set the goal of nearly doubling the area for oil palm cultivation by 2020 (UNDP 2015).

The Government of Indonesia is facing opposing and conflicting goals for 2020 and beyond—to reduce GHG emissions, halt biodiversity loss, and boost food production (Republic of Indonesia 2016). Can these goals be achieved in Indonesia under a debt-based palm oil industry and economy? The Agent-Based Model (ABM) presented here examines this question by modelling the effects of power (im)balance scenarios between debt-driven economic forces (i.e. banks and firms) and conservation forces (i.e. governments and public institutions) on social-ecological system (SES) (un)sustainability. The SES model shows the impact of different future scenarios (2018–2050) on CO<sub>2</sub> emissions, biodiversity loss and CPO production in Indonesia, and analyses impacts on economic and environmental indicators. The short- and medium-term governance and policy implications for SES sustainability in Indonesia are discussed, together with potential long-term 'system rigidity' effects enhanced by power inequalities among economic and conservation forces.

## MATERIALS AND METHODS

### Study area and problem formulation

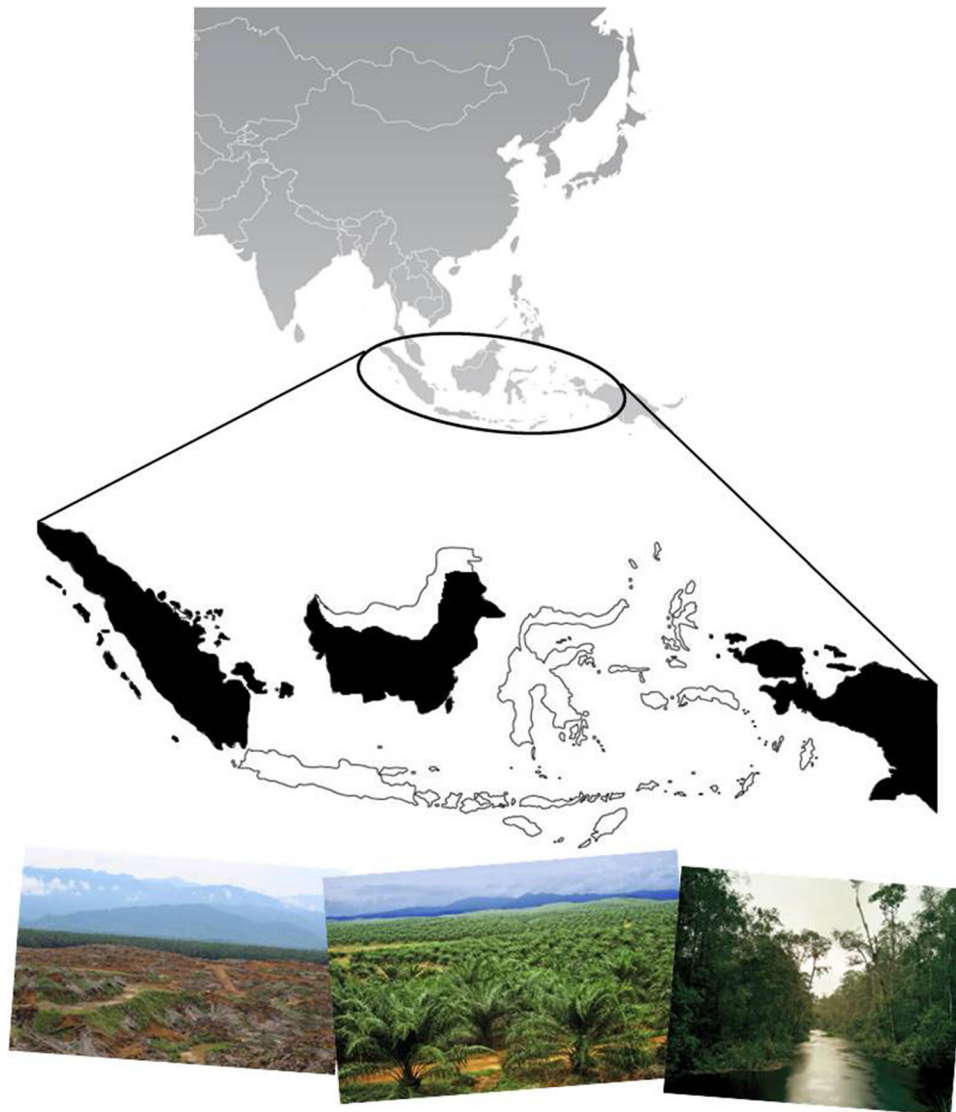
The study site (Fig. 1) comprises the provinces of Kalimantan (743 330 km<sup>2</sup>), Sumatra (473 481 km<sup>2</sup>), and Papua (319 036 km<sup>2</sup>), making a total of 1 525 847 km<sup>2</sup>. These three provinces cover 80% of the total land area in Indonesia and are some of the main producers and exporters of palm oil world-wide. Indonesian annual CPO production, which is expected to double by 2020 (UNDP 2015), is financially supported by some of the largest commercial banks headquartered in the U.S. (e.g. Bank of America), Europe (e.g. Credit Suisse), and China (e.g. Industrial and Commercial Bank of China), among others. The palm oil industry in Indonesia received USD 9.4 million in credits between 2010 and 2017 (Forest and Finance 2016) to cover the upfront costs of producing CPO, i.e. for developing land, planting seedlings, and building infrastructure (Chain Reaction Research 2017). Such reliance on external funding by the palm oil industry encourages a continuous debt-driven CPO production process which, together with logging, mineral extraction and forest fires, threatens biodiversity and releases significant quantities of carbon into the atmosphere (Carlson et al. 2013). These environmental impacts are particularly important in Indonesia, considered to be one of the major

evolutionary hotspots of biodiversity in Southeast Asia (de Bruyn et al. 2014); and where the above-ground biomass carrying capacity of some parts (essential for climate change mitigation) is 60% higher than in Amazonia forests (Slik et al. 2010).

Although various streams of ecological economics offer a biophysical view of the economy, a sound understanding of how key macroeconomic issues, e.g. global debt dynamics, are entangled with environmental shifts and destructive feedbacks at lower levels is missing (Klitgaard and Krall 2012). The model presented here addresses this research gap while contributing to identifying how the 2020 (and further) objective of Indonesia to reduce GHG emissions, halt biodiversity loss, and boost production of agricultural commodities can be achieved (Republic of Indonesia 2016). For this purpose, four different future scenarios are modelled for the period 2018–2050: Business As Usual (BAU); Reduce Biodiversity Loss (RBL); Reduce Carbon Emissions (RCE); and Sustainable Futures (SF) (Table 1). BAU prioritizes exponential economic growth and debt-based CPO production over conservation, whereas RBL, RCE, and SF prioritize biodiversity conservation, climate change mitigation, and both of these, respectively (see Table 1). Finally, in this paper, we refer to SES sustainability as a context where win–win–win results for the above-noted three indicators are achieved—where CPO production and biodiversity increase and CO<sub>2</sub> emissions diminish.

### Modelling framework

The ABM model was built using NetLogo (Wilensky 1999). ABMs simulate systems of autonomous and heterogeneous agents; these interact with each other and the environment, making decisions and changing their actions and the environment as a result of these interactions (Ferber 1999). Each agent is simulated using computer software as a data structure storing its attributes, together with algorithms that implement its behaviour, and an effect this has on other agents or the environment. ABMs are helpful for studying complex dynamics such as coupled human–natural systems, which are characterized by feedback loops, nonlinearity, thresholds, time lags, and resilience, among other characteristics (Balbi and Giupponi 2010; Filatova et al. 2013). ABMs have also proven useful in gaining general insights that support the sustainable management of resources through a better understanding of complex SES (Schulze et al. 2017). In particular, the benefits of using ABM for exploring complex coupled SES include (i) the capturing of emergent phenomena; (ii) the simulation of heterogeneous agents, which allows the simulation of complex and nonlinear behaviours from different entities; (iii) modelling the social networks and



**Fig. 1** Geographic location of the case-study area. Indonesia (top map) and the social–ecological system modelled representing the provinces of Sumatra, Kalimantan, and Papua (in black, bottom map). Photographs on the bottom show national examples of degraded land (left), oil palm plantations (centre), and protected primary swamp forest (right). Photo (left): Originally appeared in the Jakarta Globe newspaper (Indonesia), and then was reprinted by Mongabay news platform with the permission of the author (Degraded Land). Photo (middle): Plantations International company (Palm Oil). Photo (right): Photo taken by Olaf Otto Becker in South Kalimantan, Indonesian, in March 2012 (Primary Swamp Forest). Published in ClampArt website

physical space-based interactions; and (iv) obtaining a dynamic natural description of the SES studied, rather than only the final output results.

An increasing number of ABMs are being built within the land-use modelling community (Verburg 2006). Since the earliest published Agent-Based Land-Use Model (ABLUM) (see Lansing and Kremer 1993), models have gradually progressed from conceptual land-use frameworks (e.g. Epstein and Axtell 1996) to more complex empirical representations of SES (e.g. Bousquet and Le Page 2004). Recent reviews and examples of ABLUMs include Filatova et al. (2013), Matthews et al. (2007), Murray-Rust et al. (2013), or Polhill et al. (2011). Scholars have also studied the relationship between

ABM and policy-making contexts. Gilbert et al. (2018) reflect on various experiences using agent-based modelling in policy-making contexts, noting that models can take on different roles when embedded in deliberations. They also observe that there are a number of realities of day-to-day policy-making that mean any modelling (agent-based or otherwise) can be difficult to incorporate successfully. Not least of these issues is that recommendations from model outcomes may be politically unacceptable. Summarizing the key lessons from the examples they describe, Gilbert et al. (2018, Sect. 5) emphasize the issues agent-based modellers typically face with lacking data, but argue that this is not a reason not to model.

**Table 1** Narratives of the scenarios modelled

Scenario	Description
Business As Usual (BAU)	Rising global demand for vegetable oils drives oil palm plantation expansion in Indonesia, which consequently enhances increasing amounts of borrowed credits from overseas banks to finance CPO production. This process is financially beneficial for both banks and palm oil companies, yet it incurs biodiversity loss and global warming. The Government of Indonesia is more focused on creating jobs and reducing poverty through expanding the area of oil palm plantations. This situation is reinforced by weak environmental governance, as well as lack of funding allocated by international organizations for conservation
Reduce Biodiversity Loss (RBL)	Funding for conservation (mainly international) increases, thus benefiting biodiversity by enlarging the protected area network and restoring moderately degraded forests in Indonesia. Furthermore, biodiversity loss is halted by firms using credits, as well as public funding, to cover the additional costs of creating new plantations in degraded lands and to increase production efficiency in existing plantations
Reduce Carbon Emissions (RCE)	The government of Indonesia receives international funding to maximize above-ground biomass accumulation and reduce carbon emissions. Highly degraded forests are restored, due to their high potential to sequester carbon. The protected area network is enlarged, although investments are lower than in RBL since area protection benefits biodiversity conservation more. Carbon sequestration is also enhanced by firms using credits and public funding to create plantations in degraded lands (with low carbon stocks) and increasing productivity in existing cultivations
Sustainable Futures (SF)	Economically supported by international bodies and developed countries, the government's goal is to enhance win-win contexts regarding climate change mitigation and biodiversity conservation. Restoration of degraded land takes place in both highly and moderately degraded lands, which benefit biodiversity and carbon conservation. Furthermore, firms use credits and public funding to increase production efficiency in existing cultivations and create plantations in degraded lands

The methodological framework of this paper follows the TRACE documentation protocol (Grimm et al. 2014), a tool for planning, performing, and documenting good modelling practice. The following sections comprise short

characterizations of the TRACE elements corresponding to ‘Problem Formulation’—including a description of the study area and the scenarios modelled—‘Model Description’—using the Overview, Design concepts, and Details (ODD) protocol document (Grimm et al. 2006, 2010)—and ‘Data Evaluation’—including model parameterization and calibration processes.

### Model description

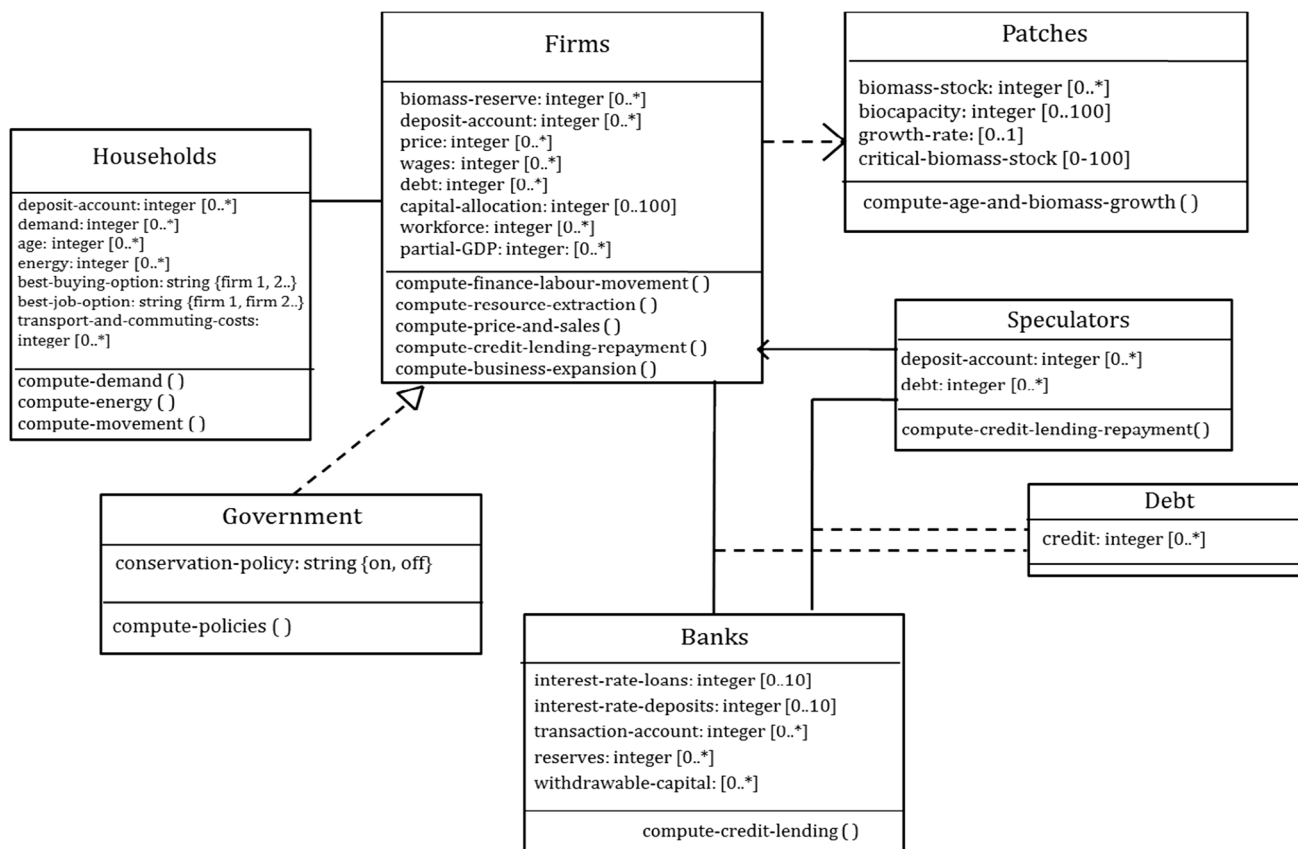
The model description follows the Overview, Design concepts, and Details (ODD) protocol document (Grimm et al. 2010). The following sections describe the ‘Entities, state variables and scales’, and ‘Process overview and scheduling’ elements from the ODD. Note that a description of the data used in the model is not provided in the main paper due to the length of the dataset. This and further empirical data about the model can be found in the Electronic Supplementary Material, where a full ODD version is presented. Also, see Table S1 for a list with all the abbreviations and terms used throughout the article.

#### *Entities, state variables, and (spatio-temporal) scales*

The key entities in the model are agents—representing firms, banks, and the government—and the environment—consisting of a grid of land-covers (i.e. patches). The bank agent represents the overseas financial entities funding CPO production in Indonesia through bank credits, while firms represent the investment groups, i.e. forest-risk groups, financing CPO production in Indonesia. Finally, the government agent represents, as a whole, the national and international policies focused on protecting land and restoring degraded land in Indonesia. Note that that the latter is a conceptual type of agent, which does not compute any specific policy in particular; thus, it is used to represent the potential effects that both national and international policies (similar to REDD<sup>1</sup> schemes) would have on SES sustainability.

The model includes a total number of 6480 cells (i.e. land-covers), which include 14 secondary land-cover types; following Hill et al. (2015), these are aggregated into three primary land-cover types, i.e. ‘protected areas’, ‘semi-natural areas’, and ‘oil palm plantations’. Simultaneously, ‘protected areas’ and ‘semi-natural areas’ are categorized as ‘nonforested’ or ‘forested’, the latter being classified into ‘lowland’, ‘montane’, ‘heath’, ‘peat swamp’, and ‘freshwater swamp’. Figure 2 shows a Unified Modelling

<sup>1</sup> REDD, which stands for Reducing Emissions from Deforestation and Forest Degradation, is a United Nations-led program offering incentives for developing countries to preserve and enhance forests.



**Fig. 2** UML class diagram. Structure diagram showing the system’s classes, their attributes, attribute values, functions/operations, and relationship between classes

Language (UML) class diagram describing the model entities and variables in detail. Furthermore, Table S2 (SI document) shows a description of the entities and state variables modelled, their units, and data sources.

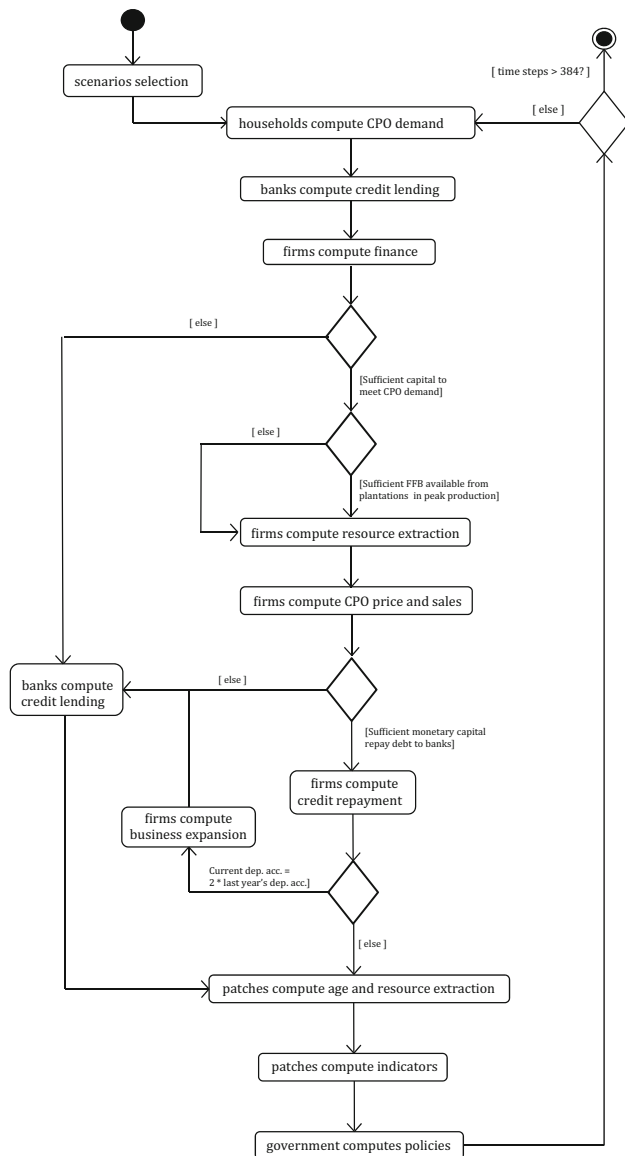
The model comprises the period 2018–2050, where each time step corresponds to one month, thus running the model for 384 monthly time steps (i.e. 32 years). The period 2008–2016 is used for model parameterization and calibration (described below). The time-scale of the model was selected by comparing the modelling outcomes for CPO production and protected area expansion during the period 2008–2016 with historic data for these indicators during the same period. The reason for selecting these indicators to set the time-scale was because these drive the main land-cover changes and outcomes in the model. Thus, analyses of the calibrated results showed a qualitative alignment between both historic data and model outcomes when using a particular time-frame, based on 1 model time step corresponding to 1 month in the real world. The period to 2050 was selected to enable sufficient time for the outcomes of the various scenarios to be realized.

The spatial-scale of the model is considered to be sub-national/national, due to the case-study area comprising a relatively high (i.e. 80%) amount of the total land covered

by Indonesia. Furthermore, the patch size selected (235.47 ha) under this spatial-scale aligns with the previously selected time-scale (i.e. 1 model time step = 1 month). Oil palm expansion was responsible for an average of 270 000 ha of forest conversion annually from 2000 to 2011 (Henders et al. 2015), making an average of 22 500 ha deforested every month, i.e. every time step in the model. The patch size selected (235.47 ha) is considered sufficiently large to enable the conversion, at the specific time-scale selected, of similar amounts of land into oil palm plantations. The same case applies to protected area expansion and degraded land restoration processes. Therefore, the time-scale selected for the model is adjusted upon the spatial-scale, as the time needed in the model (under the selected time-frame) to compute land-use change aligns with the real-world land-use change processes in Indonesia.

*Simulation process and overview*

Figure 3 shows a UML activity diagram representing the dynamics of the system and the flow from one process to the next. The following is the list of model processes taking place every time step, which are described in detail below



**Fig. 3** UML activity diagram. Structure diagram showing the step-by-step process computed by agents and patches in the model

(see supplementary material for a detailed description of model functions and algorithms): (i) compute CPO demand; (ii) banks compute credit lending; (iii) firms compute finance; (iv) banks compute credit lending; (v) firms compute resource extraction; (v) firms compute CPO price and sales; (vi) firms compute credit repayment; (vii) firms compute business expansion; (viii) patches compute age and resource extraction; (ix) patches compute indicators; (x) government computes policies.

The SES modelled is simulated under a debt-based economy, where each scenario (see Table 1) sets different rules and limits affecting the dynamics and relationships between agents and the environment. First, CPO demand

(exogenously computed) is computed on a monthly basis and distributed among the existing firms based on their current price (explained below); note that CPO demand represents the consumption by households (consumers), which are not agents in the model. Second, firms borrow credits from the bank upfront, i.e. at the beginning of each financial year, in order to cover the direct and indirect operating costs of CPO production in current plantations, including resource extraction, wages for employees, and other daily expenditures. Third, firms calculate the final monetary capital needed to cover the expenses for the following month using information on CPO demand; therefore, further credits are borrowed if additional funding to meet the CPO demand is needed.

Firms harvest fresh fruit bunches (FFB) from the plantations they own, which is the fruit produced by oil palm trees from which CPO is obtained. Firms prioritize those plantations where the average tree age ranges between 7 and 18 years—peak production of oil palm trees—since yield gradually decreases after 18 years (Wilmar 2017). Oil palms begin to produce fruits 30 months after being planted, with commercial harvest commencing 6 months later. Oil palm plantations with trees older than 25 years—max commercial lifespan—are cut down by the firm owning that land, and are replaced by new plantations with a starting age of 0 from the following month onwards. If firms cannot meet the monthly CPO demand by solely harvesting FFB from peak production plantations, those plantations with trees older than 18 years are harvested until demand is met, followed by those from 3 to 7 years.

After finishing the monthly harvesting process, each firm sets a price based on a combination of historic information, predicted data, and other firms’ prices. The firm offering the lowest price is placed at the top of a right-skewed distribution (showing price on the x-axis and demand in the y-axis), thereby being the one prioritized by consumers. When the total CPO demand for that month is met, the CPO selling process stops.

At this point, firms must start paying back their credits, with interest, to the bank. Note that, although firms in the model borrow/repay credits from/to one single bank, this bank agent (the only bank agent in the simulation) represents all financial entities, from overseas, lending money to oil palm companies in Indonesia. Furthermore, the model does not consider variations of the interest rate, despite this is known to be a major risk of debt-based agricultural production. This is because the economic system modelled does not take into account those international economic factors and processes that normally influence interest-rate variations. Hence, the model does not create endogenous interest-rate variations by itself. Nevertheless, including parameters into the model to exogenously enhance interest variations instead would not ensure the aligning of model interest

oscillations with the real-world ones. Therefore, the model just integrates the constant interest-rate value provided by the World Bank in 2016. Furthermore, note that firms continuously borrow credits to cover their direct and indirect operating costs regardless of the interest to be paid.

If firms have sufficient monetary capital in their deposit accounts, firms compute the credit repayment corresponding to that month; otherwise firms borrow a credit to cover the debt. Firms also consider expanding their business if their income shows a positive net increase compared to historic data, and their expectations about future profits are positive. In such case, firms borrow a bank credit. The identification of potentially suitable sites for new plantations follows Gingold et al. (2012) and is a scenario-dependent decision—where firms select areas based on their (CPO) production potential, land-cover availability, and conservation potential. See Fig. S1 and Tables S3–S5 to see the explanations and data used for the processes computing land-use change in the model (e.g. palm oil plantation expansion). Eventually, each firm's monthly income varies depending upon the profits obtained from CPO sales, and the expenditure on the wages allocated to employees, resource extraction processes (i.e. materials and equipment, plantation maintenance), technological investments to improve CPO production efficiency, and debt repaid to the bank. While costs associated with debt, wages, resource extraction, material, and equipment are mandatory monthly expenditures, firms' investment in technological development is a scenario-dependent decision.

Each oil palm plantation land-cover computes an age function, as well as a stock and a growth function regarding FFB. Furthermore, each land-cover (patch) computes biodiversity and carbon stock algorithms, which change over time, based on the type of land-cover change taking place in that patch and the surrounding matrix of patches. Furthermore, while the biodiversity function considers the previous, current, and next land-cover changes,—both in each land-cover and the surrounding ones—carbon is calculated from losses/gains in above-ground biomass (AGB), which is then converted to carbon and CO<sub>2</sub>. Based on the amount of AGB, each land-cover computes a degradation grade that is used for restoration purposes (see below).

The government (representing national and international public institutions investing in conservation in Indonesia) may intervene in the simulation by increasing government expenditure (GB) leading to strong (scenario-dependent) government policies. These interventions affect firms' decision-making and land-cover variables, thus influencing model outcomes. More specifically, GB is focused on implementing conservation policies through allocating public funding to firms, i.e. similar to Payments for Ecosystem Services (PES) (Wunder et al. 2008; Farley and Costanza 2010), in order to encourage firms to cover the

additional costs regarding the following actions: (i) increasing CPO production efficiency on existing plantations by investing in technological development, and (ii) creating new oil palm plantations solely on degraded lands, instead of areas with high biodiversity and carbon stocks—which are, in principle, more profitable. Furthermore, governments can also invest in (iii) degraded land restoration, and (iv) protected areas. The selection of those land-covers to be restored and protected is based on the grade of degradation and the conservation potential, respectively, while the financial opportunity cost of CPO production is calculated (at the national level) based on the revenue foregone from CPO production as a consequence of restoration and protected area creation. As previously mentioned, the government agent, which implements the above-noted four (i–iv) GB-driven processes, represents mainly international bodies and agreements (such as REDD programs), since such conservation investments and policies are unlikely to be (solely) performed by the Government of Indonesia.

### Scenarios, data evaluation, and run setup summary

Table 1 shows a qualitative description of the rationale for each scenario (i.e. BAU, RBL, RCE, and SF), while Table S6 describes the parameters, target values, and data sources selected to build and compute each scenario. Note that expert opinion was used to set the rationale for each scenario and to determine the parameters selected for the different scenarios.

We follow the TRACE documentation (Grimm et al. 2014) to perform both model parameterization and calibration processes. Model parameterization focuses on exploring model parameter values, including a list of all the parameters and values, the data sources, and how the parameter values were obtained (Railsback and Grimm 2011). In addition to Table S6 for scenarios, Table S2 shows the model entities and their state variables, as well as the parameter types, their values/units, and data sources. Among the data sources and historic data integrated in the model, of note is the use of historic banking data on debt, which drives bank and firm agents' decision-making processes. This dataset, obtained from the dataset Forest and Finance (2016), shows up-to-date information regarding the amount of credits lent by international banks to different industrial sectors in Southeast Asia, focused on funding the production of different goods and services, e.g. palm oil, timber, and cotton. The dataset includes the name of banks (lenders), types of industries (borrowers), name of firms, type of credit facilities, and amount allocated per year, among other information. Other empirical data integrated in the model include the area covered by each land-cover, oil palm trees' growth rate, CPO prices, and carbon sequestration rates, among others (see Table S2).

For the purpose of model calibration, both historic and literature data sources for the period 2008–2016 were used. The full model calibration process, including calibration results, is described in detail in Figs. S2, S3 and S4.

Finally, the model results were obtained by computing each scenario 150 times—considered a reasonable number of runs in simulation models (see Ritter et al. 2011)—making a total of 600 runs. Each simulation was then run for 384 time steps (32 years, 2018–2050), where the average and standard error values from all the runs for each simulation are shown in the result figures.

## RESULTS

The results obtained are shown in Figs. 4, 5, and 6. These were qualitatively analysed with the objective of comparing, and identifying, differences in trends among the indicators selected—within and between the scenarios modelled.

### Business As Usual (BAU)

The first row in Figs. 4, 5, and 6 shows the results obtained under BAU. This scenario shows the highest values for most economic indicators, while environmental outcomes show mainly negative trends. This is due to the protection forces in Indonesia not being sufficiently strong to halt the economic forces driving land clearing for CPO production. Thus, oil palm firms require a continuous flow of bank credits to expand oil palm plantations—normally into areas with high biodiversity (e.g. undisturbed upland forests) and high carbon stocks (e.g. swamp forests). As a result, the number of credits borrowed and CPO production increase over time, while the opportunity cost of not converting land into oil palm plantations continues to decrease. Concurrently, biodiversity loss and CO<sub>2</sub> emissions are reinforced, also due to the low level of government policies to support conservation—which nevertheless are steadily increasing over time. Regardless of the weak protection forces compared to economic ones, protected and restored land slowly increase, which aligns with current data regarding terrestrial protected land (World Bank 2018).

### Reducing Biodiversity Loss (RBL) and Reducing Carbon Emissions (RCE)

The second and third rows in Figs. 4, 5, and 6 show the results obtained for RBL and RCE scenarios, respectively. As previously indicated, each RBL and RCE scenario is divided in four different sub-scenarios, with varying values regarding two variables: BC (bank credits) and GB (government budget); in particular, four different sub-scenarios are considered, namely high GB and low BC, high GB and BC, low GB and BC, and low GB and high BC. These refer to the amount

of monetary capital initially (i.e. at the beginning of the simulation) available for conservation and CPO production, respectively. Furthermore, GB and BC are invested in different conservation and production strategies characteristic of each scenario.

RBL and RCE scenarios show similar trends for most indicators, which, as per the SF scenario (see below), minimize land requirements by intensifying CPO production. Some monetary-economic indicators (credits borrowed by firms and firms' turnovers), as well as some environmental indicators (CPO production), show more negative results than those under BAU, due to economic forces driving land clearing for CPO production being weaker than conservation forces. Under RBL, strict enforcement of forest protection enhances the creation of new protected areas, land restoration, and the creation of new policies that force firms to decrease the number of new plantations in areas with high biodiversity. Biodiversity, therefore, increases with higher GB values; the same occurs for CO<sub>2</sub> emissions, where more sustainable results are obtained under scenarios with high GB values. The main difference between RBL and RCE, in terms of biodiversity and CO<sub>2</sub> emissions, is based on the type of forests restored: while moderately degraded forest is least favoured for restoration under RCE, highly degraded forest is least favoured under RBL, thus enhancing higher biodiversity values under RBL and lower CO<sub>2</sub> emissions under RCE (see Table 1).

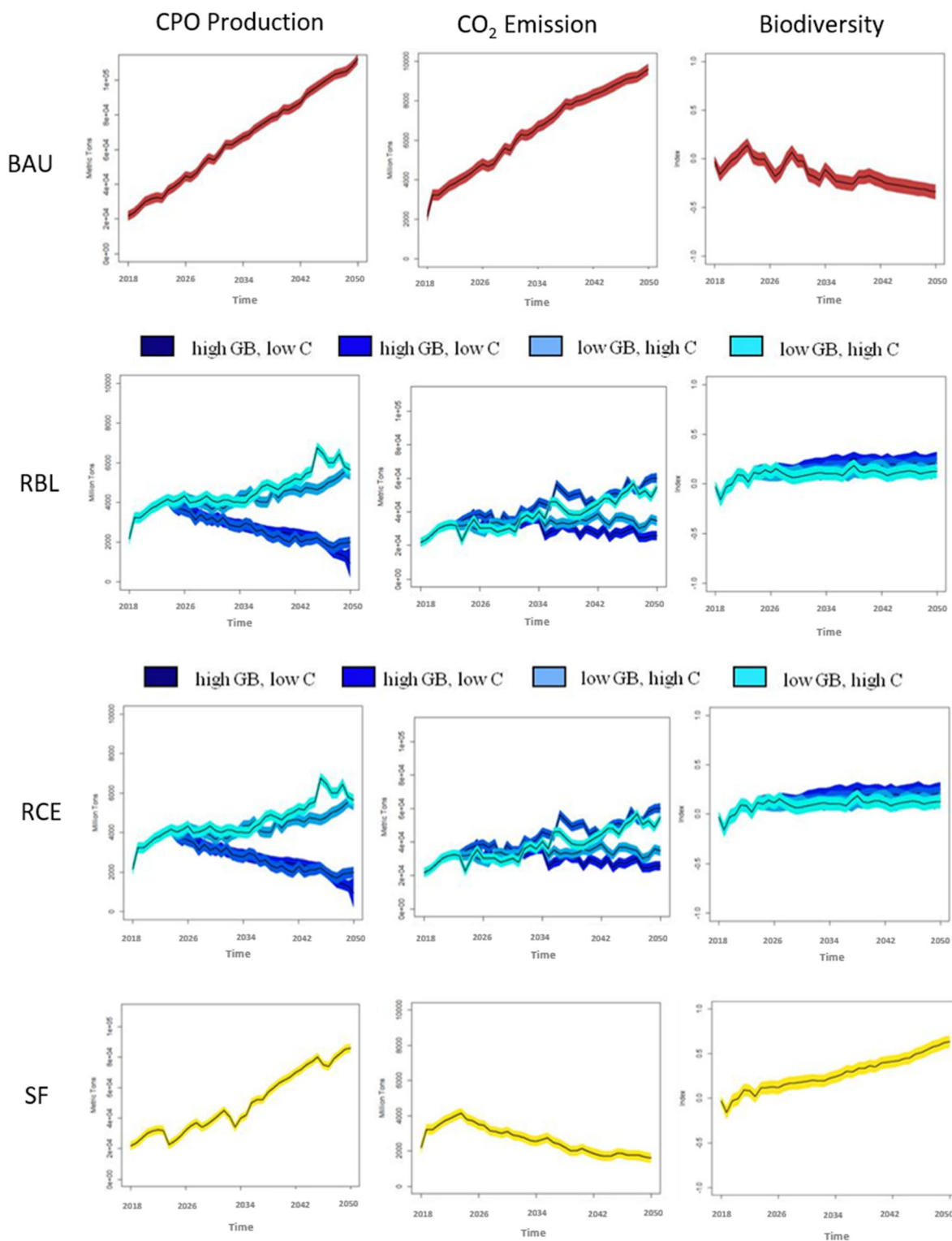
### Sustainable Futures (SF)

The fourth row in Figs. 4, 5, and 6 shows the results obtained under the SF scenario. This is the only scenario showing synergies between CPO production, CO<sub>2</sub> emissions, and biodiversity, as well as relatively positive results for the rest of indicators. As analysed in the Discussion section below, these results reflect a combination of the following factors: (i) the use of technology by firms to increase production efficiency in existing cultivations, which significantly reduces land requirements for CPO production; (ii) the creation of new plantations solely on degraded lands, thus avoiding plantation expansion into areas with high biodiversity and carbon stocks; (iii) the increase in the amount of degraded land restored; and (iv) the increase in the number and extent of protected areas.

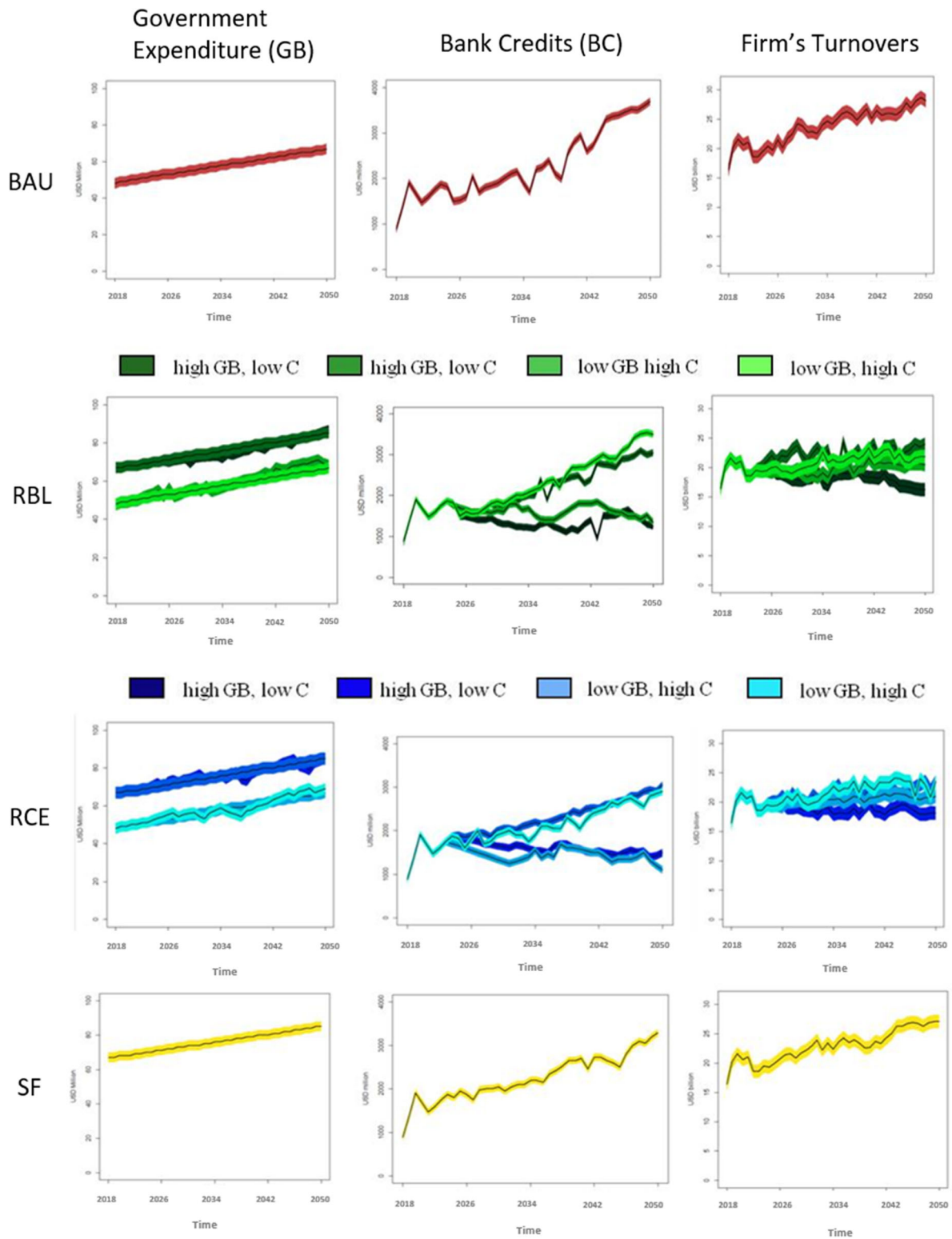
### Environmental impacts of Power Imbalances between banks and government

Results shown in Fig. 7 allow us to explore the extent to which biodiversity and CO<sub>2</sub> emission values vary under different Power Imbalance contexts between economic forces (represented by banks and credit allocation to firms, i.e. BC) and conservation forces (represented by the policies and budget allocated for conservation, from both national and

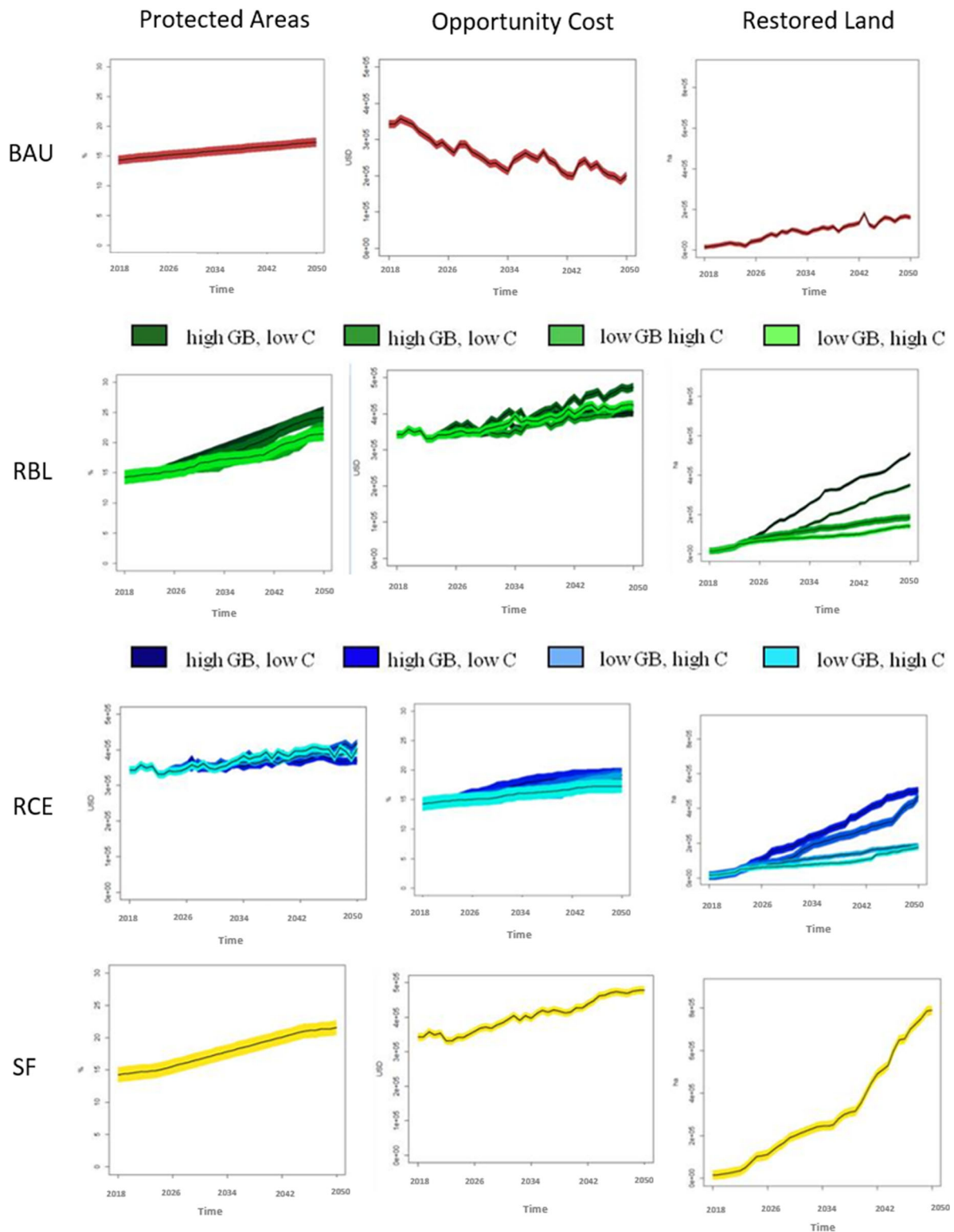




**Fig. 4** Results for SES sustainability indicators. Indicators include crude palm oil (CPO) production (metric tons); CO<sub>2</sub> emissions (metric tons); and biodiversity (index)—where plots show the individual net values per year. Results obtained under projected future scenarios (BAU = Business As Usual; RBL = Reduce Biodiversity Loss; RCE = Reduce Carbon Emissions; SF = Sustainable Futures). Coloured bands represent the standard error bars including all the runs computed for each indicator under every scenario, while black lines show the mean values. RBL and RCE scenarios are divided in four sub-scenarios each: the darker the band’s colour, the stronger the conservation forces, and the weaker the economic forces (i.e. high government expenditure (GB) for conservation, low availability of bank credits (C) for production). In contrast, light coloured banks refer to strong economic and weak conservation forces



**Fig. 5** Results for economic indicators. Indicators include Government Budget (USD million); Bank credits (USD million); and Firms' turnovers (USD billion), under each scenario



**Fig. 6** Results for land-cover change indicators. Indicators include protected areas (percent values); restored land (ha); and opportunity cost (in USD) for the oil palm industry of increasing protected areas and restoring land, under each scenario

international public entities, i.e. GB), under each scenario. The calculation of Power Imbalance values (i.e.  $x$ -axis) follows a simple calculation process between BC and GB—see supplementary material for more information.

The higher the power imbalance values (i.e. right-hand side values in the  $x$ -axis), the higher the amount of BC available for CPO production compared to GB for conservation. The lower the power imbalance values (i.e. left-hand side values in the  $y$ -axis), the lower the amount of BC available for CPO production compared to BC.

Both RBL and RCE scenarios are divided in four different sub-scenarios each, showing the amount of monetary capital initially available for CPO production (BC) and conservation (GB). The following list disaggregates the abbreviations shown in the  $y$ -axis for RCE and RBL scenarios, where ‘h’ refers to ‘high’ and ‘l’ to ‘low’. See Table S6 for the values referring to high and low:

- *RBL\_ll*: RBL scenario with low (‘l’) GB and low (‘l’) BC.
- *RBL\_lh*: RBL scenario with low (‘l’) GB and high (‘h’) BC.
- *RBL\_hl*: RBL scenario with high (‘h’) GB and low (‘l’) BC.
- *RBL\_hh*: RBL scenario with high (‘h’) GB and high (‘h’) BC.

Note that each scenario ( $y$ -axis) not only consists of different GB and BC values (i.e. monetary capital invested for conservation or CPO production), but also includes other processes and properties characteristic of each scenario, e.g. different rates of technological efficiency selected for CPO production by firms, potential areas selected for restoring degraded lands (see Table S6).

Figure 7 shows that high Power Imbalance values (i.e.  $x$ -axis), under the BAU scenario (i.e.  $y$ -axis), exert negative impacts on both biodiversity and CO<sub>2</sub> emissions. In contrast, the SF scenario shows considerably higher values for both indicators. The different sub-scenarios represented by RBL and RCE show varying results regarding both indicators, including trade-offs among sub-scenarios, with predominantly better results (in terms of sustainability) obtained for biodiversity under RBL and CO<sub>2</sub> under RCE.

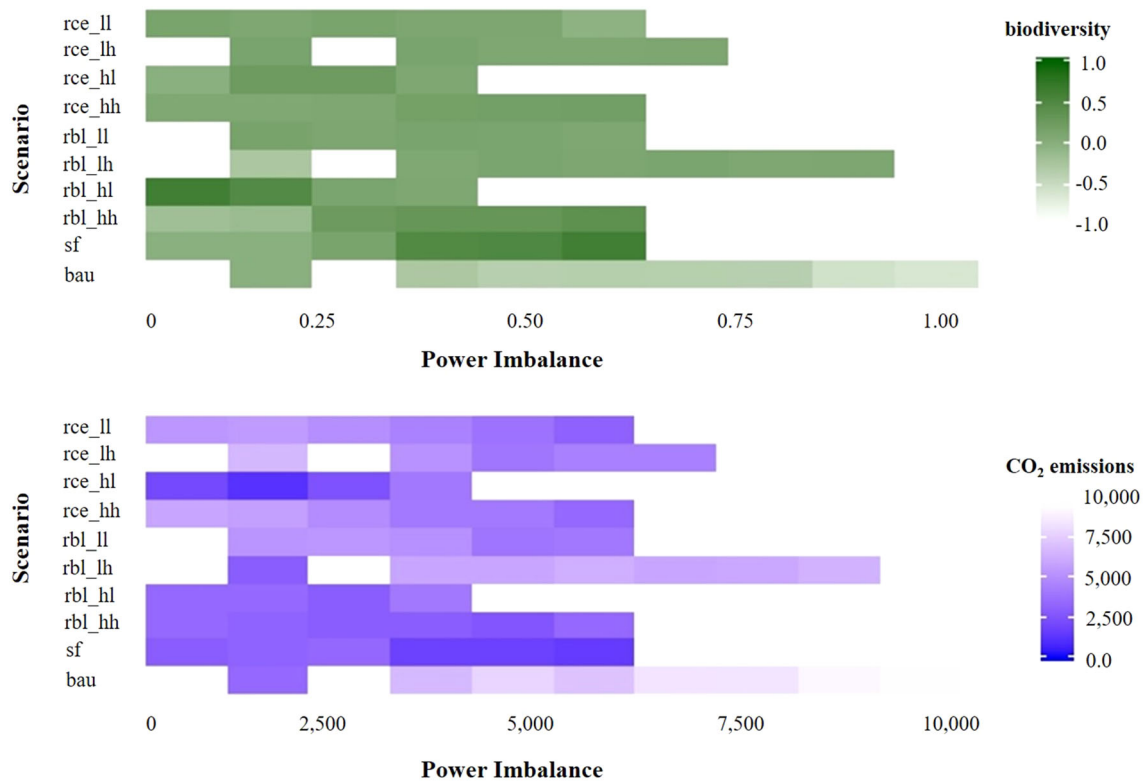
## DISCUSSION

### Analysing the relationship between conservation forces, economic powers, and SES sustainability in Indonesia

Oil palm development, forest conservation, and climate change mitigation are strategies that are, at first glance, in opposition to one another (UNEP 2011). Considering that

the same debt-based economy is modelled under both BAU and SF scenarios, the main factor driving SES (un)sustainability among these scenarios is the (in)appropriate use that oil palm companies make of bank credits—rather than the amount of credits borrowed or the debt-based nature of the economic system itself. Thus, the problem causing unsustainable outcomes is not the economic system itself—an economic system that creates a high dependency of different actors on debt and banks—but the purpose for which credit facilities are borrowed and allocated. In fact, the SF scenario (Fig. 7) shows synergies between debt (i.e. credits borrowed), high biodiversity, and low CO<sub>2</sub> emissions, showing that the use of bank credits more in line with concerted land conservation may be beneficial for SES sustainability. These results, therefore, align with recent research arguing that the current utilization of credit facilities by firms—focused on covering daily operating costs and expanding oil palm plantations into areas with high biodiversity and carbon stocks—is a key problem for sustainability in Indonesia (Alwarritzi et al. 2015). In this regard, scholars argue that using bank credits to increase production efficiency in existing oil palm cultivations could be sufficient to meet the growing world demand for Indonesian CPO, while helping conserve the highly valuable habitats in terms of biodiversity and carbon sequestration. For instance, Fairhurst (2009) shows that yield improvements in existing cultivation alone could potentially avoid the need to expand into 1.6 million hectares of forest. Simultaneously, planting oil palms in degraded land is suggested as an alternative solution to help meet global CPO demand, while avoiding the release of excessive CO<sub>2</sub> to the atmosphere and further biodiversity loss (Koh and Ghazoul 2010).

The problem with alternative solutions focused on enhancing sustainable CPO production is that debt-dependent palm oil companies, such as firms under the BAU scenario, are unlikely to use credit facilities to finance less profitable, financially riskier ‘innovative’ CPO production processes, i.e. create new plantations in degraded lands and investing in technological efficiency (e.g. high-yielding oil palm genome projects, or information systems providing real-time results on palm oil plantations). Similarly, banks are unlikely to lend to firms unless the credit is used to finance processes or activities that ensure short-term profits for firms and, thus, provide financial security for banks. Currently, traditional oil palm cultivation, in biologically rich areas, provides firms with higher short-term profits, due to the low price of land in these areas. In fact, ‘innovative’ palm oil companies (i.e. firms implementing the above-noted more sustainable strategies) would probably be under-cut on international markets by traditional palm oil producers from other countries (i.e. BAU firms). In view of this, there is a need to financially support oil palm



**Fig. 7** Impact on biodiversity and CO<sub>2</sub> emissions of Power Imbalance values. The top heatmap shows the impact of different power (im)balance rates between economic and conservation forces on biodiversity, while the bottom heatmap shows the same impacts on CO<sub>2</sub> emissions (in millions of tons). Dark coloured cells represent high values, while low values are represented by light coloured cells. Cells in blank show those scenarios with neither biodiversity nor CO<sub>2</sub> emission values computed for certain Power Imbalance values. See main text for an explanation of the abbreviations in the y-axis

companies to shift their BAU paradigm to more sustainable scenarios. For instance, our model shows funding being allocated to oil palm companies under the SF scenario, which helps firms cover the additional costs of increasing technological efficiency in existing plantations and establish new plantations in degraded lands. Thus, new financial mechanisms could help firms cover the currently higher costs of adopting more sustainable practices (see Ruyschaert et al. 2011); until technological development or the market itself—due to land scarcity—starts inherently supporting more sustainable CPO production, i.e. due to a reduction of prices and operational costs related to more sustainable practices.

In this regard, PES (Wunder et al. 2008; Farley and Costanza 2010) could be considered a potential short-term (temporary) solution within the transition towards long-term sustainability. PES seek to ascribe monetary value to ES (Bellver-Domingo et al. 2016), for instance through international schemes, such as REDD programs. REDD offers incentives for developing countries to preserve and enhance forests, thus offsetting the growth in global GHG emissions (Angelsen 2008). The model presented here shows that, if sufficient funding is allocated to firms for

enhancing more sustainable CPO production mechanisms, short- and medium-term synergies among the sustainability indicators explored could be reinforced. In fact, results show that this could take place without having to replace the debt-based (economic) production system nor reducing the current power of banks. Thus, there is a need to increase the socio-political and financial support from international bodies to Indonesian oil palm companies (e.g. PES schemes) to enhance the delivery of multiple beneficial ES. As an example, Indonesia signed a US\$1 billion deal with Norway in 2010, under the REDD framework, aimed at reducing deforestation as a follow-up of the United Nations Climate Change Conference held in Cancun, Mexico (Lang 2010). Furthermore, it is expected that 200 billion Euros will be transferred world-wide through PES schemes by 2020 (GIZ 2016). The problem here is that funding for development is usually much higher than that for conservation (Hill 2015; Laurance 2018); for instance, the leaders of the G20 nations gave a huge boost to the power of development regimes by promising to invest 60–70 trillion U.S. dollars for new infrastructure projects by the year 2030 (Hill 2015; Laurance 2018). Therefore, if the objective is for PES to be able to compete with the

agricultural sector, investments for PES and other financial mechanisms need to increase (Butler et al. 2009).

Besides this, results obtained under low Power Imbalance values in the SF scenario (see darker coloured cells under RBL\_hl and RCE\_hl scenarios, Fig. 7) also show the need to enhance conservation forces in terms of increasing the number and extent of protected areas, as well as restoring degraded land. Under these scenarios, the power of governance forces driving land protection and restoration is higher than that from banks and economic forces driving land clearing for CPO production. As a result, Fig. 7 shows the positive impact in biodiversity and carbon sequestration of having stronger conservation forces. Furthermore, an increase in the funding allocated for both enlarging the current protected area network and restoring part of the 46.7 million hectares of degraded land present in Indonesia would help drive sustainability. These results can help the Indonesian government in responding to recent criticism (Murdiyarso et al. 2011) about giving greater importance to land protection than restoration through the REDD agreement with Norway. In fact, recent research demonstrates that the creation of protected areas in Indonesian forests is a less effective way of halting deforestation and biodiversity loss than restoring degraded land (Symes et al. 2015). Yet, our results demonstrate that the two pathways are not mutually exclusive and support both ongoing protected area creation and the proposal for the inclusion of part of the 400 000 ha of highly degraded lowland forest into the moratorium.

It is important to note that the outcomes of the model are dependent on the framing of the scenarios and the model itself. In this regard, though it makes policy recommendations, the work discussed here is not embedded in a policy-making process, but instead uses a case-study to explore the principles underlying the role of debt in managing SES. As Polhill et al. (2019) note, policy-makers typically rely on a diverse, trusted sources when making decisions, and, critically, the results from the model need to be delivered in a clear, transparent way at the right time. The point is picked up by Elsawah et al. (2019), who, discussing models of SES in general (not just ABMs), suggest improving modellers' understanding of the processes underlying political decision-making as a way forward. Haigh's (1998) observation on the development of European policy on lead in petrol is an instructive, if little-cited, starting point in that regard.

Overall, our results, from our SF scenario, show evidence that, with various adjustments, a compromise solution regarding the dual objectives of CO<sub>2</sub> emissions and biodiversity—while enhancing CPO production and oil palm companies' income—can be achieved under a debt-based economy. More specifically, these mutual benefits occur when firms make a more appropriate, and

sustainable, use of credit facilities, and when governments support stronger conservation policy in Indonesia. In this regard, the role of international financial support will be essential to compensate the lack of incentives allocated by the Indonesian Government for environmental conservation. The latter situation is reinforced by governments from developing countries being usually more focused on reducing poverty and social issues than on solving environmental sustainability issues (Redfield 1996).

Yet, while our model shows evidence that, under certain conditions, achieving a win–win–win outcome in Indonesia is potentially achievable, we argue that it is necessary to perform sustainability studies that go beyond trade-off analyses. Examining the nature, and inherent mechanisms, of debt-based SES can help us to explore whether these can be truly sustainable in the long-term. The following section explores this issue as a starting point regarding the internal and external mechanisms that may be driving long-term (un)sustainability in Indonesia.

### What factors enhance system rigidity and long-term (un)sustainability in debt-based SES?

Besides achieving win–win–win scenarios for the selected indicators (i.e. SES sustainability in this paper), long-term sustainability can be defined as a system's ability to persist over time (Dawson et al. 2010). In other words, sustainability occurs over an infinite time horizon in which the objective is to maintain system functions, i.e. the goal is to continue to play the game (Carse 1987). Although our modelling shows positive results for different indicators, some scholars argue that Indonesia possesses some particular characteristics that could be hindering long-term sustainability (Ulanowicz et al. 2009). Besides the trade-off analysis performed, our results also show the lack of capacity of the SES modelled to cultivate internal autocatalysis, as well as its high dependency on unstable external financial institutions. It is argued that these characteristics turn SESs into 'rigid' systems (see Burkhard et al. 2011). System rigidity refers to a situation where a system becomes so efficient in its processes that there is little room for further innovation and sustainability (Fath et al. 2015). Characteristics of a rigid system include very few key nodes and a high concentration of influence; being highly vulnerable to external disturbances because of reduced diversity (Fath et al. 2015); and brittleness, i.e. lack of resilience (Jackson 2010). As shown by our model, Indonesia possesses a high dependency on external financial institutions (i.e. banks), with two main nodes (i.e. palm oil industry and banks) and a primary single pathway connecting both agents, "navigated" by credits and interest.

We highlight four main socio-economic and political factors that could be strengthening, and reinforcing, long-term system rigidity in Indonesia. First, Indonesia is the top

exporter of palm oil in the world; between 2000 and 2014 exports and consumption of CPO in Indonesia increased from 5 to 22 and from 3 to 11 Mt, respectively (USDA 2014). The current significant contribution of oil palm production to regional, national, and local economies (Zen et al. 2005) will be supported, at least in the near future, by doubling the land area under oil palm by 2020 (UNDP 2015). Second, CPO production has resulted in economic improvement of rural areas by providing jobs for local people (Hirawan 2011). More specifically, increasing agricultural incomes from CPO production is critical for poor smallholder households that depend largely on natural resources for their livelihood (Klasen et al. 2013). Third, system rigidity is also enhanced by the reliance of the palm oil industry on upfront capital funding from overseas banks, needed to develop land, plant seedlings, and build infrastructure (Chain Reaction Research 2017). Thus, the current debt-based palm oil industry is supported by both banks and the industry itself, since it enhances a win–win economic context where the former gain benefits from the interest on their loans and the latter continues to increase its turnover due to the rising demand for CPO. Moreover, the risk averse nature of banks and farmers, as well as the high operational costs, leaves little room for change in terms of carrying out more sustainable practices (Ruysschaert et al. 2011). Last, but not least, weak conservation governance in most tropical countries does not help to counterbalance system rigidity supported by the debt-driven palm oil industry. This places BAU economic forces at a privileged position at the expense of conservation forces (Hill et al. 2015). As a result, developing countries, such as Indonesia, do not possess enough funding for conservation (or are not willing to use it for that purpose), nor receive enough international financial support. For instance, although Indonesia signed the US\$1 billion deal with Norway under the REDD framework (Lang 2010), so far, the agreement has not made much difference to the rate of deforestation—due to corruption, bad practices, and stronger economic forces compared to conservation (Lang 2010, 2017).

With regard to the win–win context created by the debt-based CPO production for both the industry and banks, it is important to mention that 14 of the 32 Indonesian billionaires identified by Forbes magazine have accumulated their wealth at least in part through the palm oil industry (Forbes 2018). This includes 6 of the country's 10 richest, and 12 of its wealthiest twenty. Since Indonesia continues to be the world's top producer of the commodity since the palm oil boom of the 2000s, this country is becoming one of the most unequal societies. Hence, wealth is concentrated in few billionaires while the rest of the country remains poor at lower socio-economic scales.

The previously mentioned factors are creating a 'rigid' context in Indonesia; where a debt-driven CPO production

system, in which debt is not used in ways that promote sustainable outcomes, will likely continue to be socio-economically supported in the long-term by different key actors—including banks, oil palm companies, farmers, and the government. Thus, a long-term shift in the mainstream BAU thinking is required among palm oil stakeholders and farmers through novel farmer policy guidance, environmental legislation, and incentive mechanisms to drive sustainability. In this regard, in addition to the previously discussed PES schemes, favouring partial public (governmental) intervention in the CPO market system could also help reducing system rigidity. For instance, market intervention through different policies could address the Indonesian smallholders' aversion to risk, currently represented by their unwillingness to use credit facility to create new plantations in degraded lands. Hence, cheaper bank financing mechanisms (e.g. interest-free loans) offered by more secure financial entities, e.g. micro-finance institutions (see Ruysschaert et al. 2011) could incentivize a more sustainable use of bank credits by farmers. Similarly, stronger conservation governance could help compensate for the negative environmental impacts exerted by the stronger financial powers driving land clearing in Indonesia. In fact, good conservation governance has proved successful in reducing deforestation and the number of unprotected forests in some tropical areas, such as the Amazon (Soares-Filho et al. 2006). However, high levels of corruption and low public governance quality in Indonesia, which was ranked second to last in a Global Competitiveness Report survey in 2015 (OECD 2016), could be hindering long-term sustainability and system rigidity through low levels of funding allocation for environmental conservation (Sodhi et al. 2007). We argue that the problem here is the political difficulty of implementing policies that, indirectly, reduce the power of influential financial institutions that are not interested in any paradigm shift. Thus, governments are usually not free to create new institutions that could help encourage long-term sustainability, but must take account of the influence of industries and other interest groups (Abel et al. 2006). This is due to the high dependency of national economies on very few corporations or monopolies, which could be one of the reasons why systems so often remain maladapted to current unsustainable conditions, to the point of collapse (Abel et al. 2006).

We argue that developing countries, such as Indonesia, could benefit from better conservation governance, as well as higher levels of public expenditure through international PES schemes (Hopkin and Rodriguez-Pose 2017). For this purpose, governments from developed countries will need to assist developing countries in their effort to enhance natural resource sustainability under debt-based economic systems (Balmford et al. 2002).

## CONCLUSIONS AND FURTHER RESEARCH

The results of our modelling of the debt-based CPO in Indonesia show that achieving sustainability is largely depending on whether the Indonesian, and global, societies are prepared to either pay the financial and societal costs of reigning in oil palm development, or accepting a comparatively smaller trade-off with agricultural land in return for increasing environmental sustainability. We show that it is possible to pursue a course of sustainable development that substantially minimizes trade-offs in the short to medium term. In particular, the modelling (SF scenario) showed synergies among different sustainability indicators under certain socio-economic and governance contexts. The alternatives—whereby economic growth has priority through oil palm expansion (BAU scenario), or biodiversity and CO<sub>2</sub> absorption are indirectly enhanced together with a partial decrease in CPO production (RBE and RCE scenarios)—implied substantial losses of either biodiversity or CPO stocks (or both), with increasing CO<sub>2</sub> emissions.

More specifically, we conclude that:

- (1) *Economic-development forces are stronger than conservation forces in Indonesia*, driven by an inappropriate, and unsustainable, use of credit facilities by palm oil companies. This situation is currently strengthened and reinforced by weak conservation governance;
- (2) *Synergies among ES and biodiversity can be enhanced; not by incurring a change or replacement of the current debt-based economic or CPO production systems, but by shifting the mainstream BAU thinking of key economic actors*. Shifting market-driven, capitalist forces to support environmental conservation requires novel farmer policy guidance, environmental legislation, and incentive mechanisms from international bodies and developed countries; and
- (3) *There is a need to enhance conservation governance in Indonesia*. Not only in terms of increasing protected areas and restoring degraded land, but also favouring partial, responsible governmental intervention in the CPO market system.

This research, and its conclusions, could be strengthened by modelling a more complex banking system, including further credit lending mechanisms; and by exploring the extent to which overseas banks are willing to lend credits to firms to finance innovative CPO production processes (e.g. for technology efficiency improvements and degraded land upgrading)—instead of traditional palm oil cultivation processes. Exploring alternative banking mechanisms that enhance profits for both firms and banks, while supporting

environmental conservation, would also strengthen the analysis. Conservation forces can be further specified in the model by integrating specific empirical data from current PES schemes. Furthermore, the model could benefit from carrying out participatory processes with stakeholders, including farmers and government agents, banks, and oil palm companies. Thus, integrating data from the bottom-up would enable a more detailed modelling analysis regarding the relationships, adaptive behaviour, and dynamics between agents and the environment modelled, and provide opportunities for them to learn from one another in ways that could drive greater support for sustainability initiatives that produce win–win–win outcomes.

**Acknowledgements** This work was partially supported by the Post-graduate School at the James Hutton Institute, Aberdeen, UK. In addition, support was also provided by the University of Dundee (Geography and Environment Science). The authors are solely responsible for the content of this publication. This research did not receive any specific grant from funding agencies in the public, commercial, or not-for-profit sectors.

## REFERENCES

- Abel, N., D.H.M. Cumming, and J.M. Anderies. 2006. Collapse and reorganization in social-ecological systems: Questions, some ideas, and policy implications. *Ecology and Society* 11: 17.
- Alwarritzi, W., N. Teruaki, and H. Yosuke. 2015. Analysis of the factors influencing the technical efficiency among oil palm smallholder farmers in Indonesia. *Procedia Environmental Sciences* 28: 630–638.
- Angelsen, A. (ed.). 2008. *Moving ahead with REDD: Issues, options and implications*. Bogor: Center for International Forestry Research (CIFOR).
- Balbi, S., and C. Giupponi. 2010. Agent-based modelling of socio-ecosystems: A methodology for the analysis of adaptation to climate change. *International Journal of Agent Technologies and Systems* 2: 17–38.
- Balmford, A., A. Bruner, P. Cooper, R. Costanza, S. Farber, R.E. Green, M. Jenkins, P. Jefferiss, et al. 2002. Economic reasons for conserving wild nature. *Science* 297: 950–953.
- Bellver-Domingo, A., F. Hernandez-Sancho, and M. Molinos-Senante. 2016. A review of payment for ecosystem services for the economic internalization of environmental externalities: A water perspective. *Geoforum* 70: 115–118.
- Bousquet, F., and C. Le Page. 2004. Multi-agent simulations and ecosystem management: A review. *Ecological Modelling* 176: 313–332.
- Burkhard, B., B.D. Fath, and F. Müller. 2011. Adapting the adaptive cycle: Hypotheses on the development of ecosystem properties and services. *Ecological Modelling* 222: 2878–2890.
- Butler, R.A., L.P. Pin Koh, and J. Ghazoul. 2009. REDD in the red: Palm oil could undermine carbon payment schemes. *Conservation Letters* 2: 67–73.
- Carlson, K.M., L.M. Curran, G.P. Asner, A.M. Pittman, S.N. Trigg, and J.M. Adeney. 2013. Carbon emissions from forest conversion by Kalimantan oil palm plantations. *Nature Climate Change* 3: 283–287.



- Carse, J.P. 1987. *Finite and infinite games: A vision of life as play and possibility*. New York: Ballantine Books.
- Chain Reaction Research. 2017. Banks finance more palm oil than investors: Investors face indirect exposure. *Aid environment, Climate Advisers, Profundo* [online]. Accessed May 7, 2018, from <https://chainreactionresearch.files.wordpress.com/2017/02/banks-financing-palm-oil-crr-170203.pdf>.
- Daly, H. 2011. Growth, debt, and the World Bank. *Ecological Economics* 72: 5–8.
- Dawson, T.P., M.D.A. Rounsevell, T. Kluvánková-Oravská, V. Chobotova, and A. Stirling. 2010. Dynamic properties of complex adaptive ecosystems: Implications for the sustainability of service provision. *Biodiversity and Conservation* 19: 2843–2853.
- De Bruyn, M., B. Stelbrink, R.J. Morley, R. Hall, G.R. Carvalho, C.H. Cannon, G. van den Bergh, E. Meijaard, et al. 2014. Borneo and Indochina are major evolutionary hotspots for Southeast Asian biodiversity. *NCBI* 63: 879–901.
- Elsawah, S., T. Filatova, A. J. Jakeman, A. J. Kettner, M. L. Zellner, I. N. Athanasiadis, S. H. Hamilton, R. L. Axtell, et al. 2019. Eight grand challenges in socio-environmental systems modeling. *Socio-Environmental Systems Modelling* 2: 16226.
- Epstein, J., and R. Axtell. 1996. *Growing artificial societies. Social Science from the Bottom up*. Washington: The Brookings Institution.
- Fairhurst, T. 2009. *Sustainable oil palm development on degraded land in Kalimantan. Semantic Scholar*. Washington: World Wildlife Fund.
- Farley, J., and R. Costanza. 2010. Payments for ecosystem services: From local to global. *Ecological Economics* 69: 2060–2068.
- Fath, B.D., C.A. Dean, and H. Katzmair. 2015. Navigating the adaptive cycle: An approach to managing the resilience of social systems. *Ecology and Society* 20: 24.
- Ferber, J. 1999. *Multi-agent systems: An introduction to distributed artificial intelligence*, 509. Harlow: Addison-Wesley Longman.
- Filatova, T., P.H. Verburg, D.C. Parker, and C.A. Stannard. 2013. Spatial agent-based models for socio-ecological systems: Challenges and prospects. *Environmental Modelling & Software* 45: 1–7.
- Forbes. 2018. Indonesia's 50 Richest. Forbes [online]. Accessed October 2019, from <https://www.forbes.com/indonesia-billionaires/list/#tab:overall>.
- Forest and Finance—Rainforest Action Network (RAN), TuK INDONESIA, and Profundo. 2016. *Data* [online]. Accessed April 2018, from <http://forestsandfinance.org/>.
- Gilbert, N., P. Ahrweiler, P. Barbrook-Johnson, K.P. Narasimhan, and H. Wilkinson. 2018. Computational modelling of public policy: Reflections on practice. *Journal of Artificial Societies and Social Simulation* 21: 14.
- Gingold, B., A. Rosenbarger, Y.I.K.D. Muliastira, F. Stolle, I.M. Sudana, M.D.M. Manessa, A. Murdimanto, S.B. Tiangga, et al. 2012. How to identify degraded land for sustainable palm oil in Indonesia. Working Paper. World Resources Institute and Sekala, Washington DC [online]. Accessed January 12, 2018, from [http://data.wri.org/POTICO/English\\_how\\_to\\_identify\\_degraded\\_land\\_for\\_sustainable\\_palm\\_oil\\_in\\_indonesia.pdf](http://data.wri.org/POTICO/English_how_to_identify_degraded_land_for_sustainable_palm_oil_in_indonesia.pdf).
- GIZ—Deutsche Gesellschaft für Internationale Zusammenarbeit GmbH. 2016. *Agriculture, Fisheries and Good* [online]. Cited March 15, 2018, from <https://www.giz.de/expertise/downloads/giz2014-en-pes.pdf>.
- Grimm, V., U. Berger, F. Bastiansen, S. Eliassen, V. Ginot, J. Giske, J. Goss-Custard, T. Grand, et al. 2006. A standard protocol for describing individual-based and agent-based models. *Ecological Modelling* 198: 115–126.
- Grimm, V., U. Berger, D.L. DeAngelis, J.G. Polhill, J. Giske, S.F. Railsback. 2010. The ODD protocol: A review and first update. *Ecological Modelling* 221: 2760–2768.
- Grimm, V., J. Augusiak, A. Focks, B.M. Frank, F. Gabsi, A.S.A. Johnston, C. Liu, B.J. Martin, et al. 2014. Towards better modelling and decision support: Documenting model development, testing, and analysis using TRACE. *Ecological Modelling* 2080: 129–139.
- Haigh, N. 1998. Roundtable 4: Challenges and opportunities for IEA—Science–policy interactions from a policy perspective. *Environmental Modelling and Assessment* 3: 135–142.
- Henders, S., U.M. Persson, and T. Kastner. 2015. Trading forests: Land-use change and carbon emissions embodied in production and exports of forest-risk commodities. *Environmental Research Letters* 10: 125012.
- Hill, R. 2015. Why biodiversity is declining even as protected areas increase? *Food Governance* [online]. Cited May 21, 2018, from <https://foodgovernance.com/2015/03/17/ro-hill-on-why-biodiversity-is-declining-even-as-protected-areas-increase/>.
- Hill, R., C. Miller, B. Newell, M. Dunlop, and I.J. Gordon. 2015. Why biodiversity declines as protected areas increase: The effect of the power of governance regimes on sustainable landscapes. *Sustainability Science* 10: 357–369.
- Hirawan, F.B. 2011. The impact of palm oil plantations on Indonesia's rural economy. In *Agricultural development, trade and regional cooperation in developing East Asia*, 66. Jakarta: ERIA.
- Hopkin, J., and A. Rodriguez-Pose. 2017. Grabbing hand” or “helping hand”? Corruption and the economic role of the state. *Governance* 20: 187–208.
- ICCT. 2016. International Council on Clean Transportation. Ecological Impacts of palm oil expansion in Indonesia. White Paper.
- ICSU and ISSC. 2015. *Review of the sustainable development goals: The science perspective*. Paris: International Council for Science (ICSU).
- Jackson, S. 2010. *Architecting resilient systems: Accident avoidance and survival and recovery from disruptions*, 7. Hoboken: Wiley.
- Klasen, S., J. Priebe, and R. Rudolf. 2013. Cash crop choice and income dynamics in rural areas: Evidence for post-crisis Indonesia. *Agricultural Economics* 44: 349–364.
- Klitgaard, K.A., and L. Krall. 2012. Ecological economics, degrowth, and institutional change. *Ecological Economics* 84: 247–253.
- Koh, L.P., and J. Ghazoul. 2010. Spatially explicit scenario analysis for reconciling agricultural expansion, forest protection, and carbon conservation in Indonesia. *Proceedings of the National Academy of Sciences of the United States of America* 107: 11140–11144.
- Lang, C. 2010. Brazil: The double role of Norway in conserving and destroying the Amazon. *REDD-Monitor* [online]. Accessed February 25, 2018, from <http://www.redd-monitor.org/2010/05/26/brazil-the-double-role-of-norway-in-conserving-and-destroying-the-amazon/>.
- Lang, C. 2017. After seven years, Norway's US\$1 billion REDD deal in Indonesia is still not stopping deforestation. *REDD-Monitor* [online]. Accessed March 15, 2018, from <http://www.redd-monitor.org/2017/12/28/after-seven-years-norways-us1-billion-redd-deal-in-indonesia-is-still-not-stopping-deforestation/>.
- Lansing, J.S., and J.N. Kremer. 1993. Emergent properties of Balinese water temple networks: Coadaptation on a rugged fitness landscape. *American Anthropologist* 95: 97–114.
- Laurance, W.F. 2018. Conservation and the global infrastructure tsunami: Disclose, debate, delay! *Trends in Ecology & Evolution* 33: 568–571.
- Matthews, R.B., N.G. Gilbert, A. Roach, J.G. Polhill, and N.M. Gotts. 2007. Agent-based land-use models: A review of applications. *Landscape Ecology* 22: 1447–1459.

- Murdiyarsa, D., S. Dewi, D. Lawrence, and F. Seymour. 2011. *Indonesia's forest moratorium: A Stepping stone to better forest governance?*. Bogor: Center for International Forestry Research.
- Murray-Rust, D., V. Rieser, D.T. Robinson, V. Milicic, and M. Rounsevell. 2013. Agent-based modelling of land use dynamics and residential quality of life for future scenarios. *Environmental Modelling & Software* 46: 75–89.
- OECD. 2016. Economic Surveys: Indonesia [online]. Accessed July 12, 2017, from <https://www.oecd.org/eco/surveys/indonesia-2016-OECD-economic-survey-overview-english.pdf>.
- Paltseva, J., S. Searle, and C. Malins. 2016. *Potential for advanced biofuel production from palm residues in Indonesia*. Washington, DC: The International Council on Clean Transportation.
- Polhill, J.G., A. Gimona, and R.J. Aspinall. 2011. Agent-based modelling of land use effects on ecosystem processes and services. *Journal of Land Use Science* 6: 75–81.
- Polhill, J.G., J. Ge, M.P. Hare, K.B. Matthews, A. Gimona, D. Salt, and J. Yeluripati. 2019. Crossing the chasm: A 'tube-map' for agent-based social simulation of policy scenarios in spatially-distributed systems. *Geoinformatica* 23: 169–199.
- Railsback, S.F., and V. Grimm. 2011. *Agent-based and individual-based modelling: A practical introduction*. Princeton: Princeton University Press.
- Redfield, E. 1996. North Queensland's tropical rainforests: The world heritage controversy. In *Sustainable forestry challenges for developing countries*, ed. M. Palo and G. Mery. Environmental Science and Technology Library, 10. Dordrecht: Springer.
- Republic of Indonesia. 2016. Indonesia's Intended Nationally Determined Contribution (INDC) [online]. Accessed August 16, 2017, from [http://www4.unfccc.int/ndcregistry/PublishedDocuments/Indonesia%20First/First%20NDC%20Indonesia\\_submitted%20to%20UNFCCC%20Set\\_November%20%202016.pdf](http://www4.unfccc.int/ndcregistry/PublishedDocuments/Indonesia%20First/First%20NDC%20Indonesia_submitted%20to%20UNFCCC%20Set_November%20%202016.pdf).
- Ritter, F.E., M.J. Schoelles, K.S. Quigley, and L.C. Kelin. 2011. Determining the number of simulation runs: Treating simulations as theories by not sampling their behaviour. In *Human-in-the-loop simulations: Methods and practice*, ed. S. Narayanan and L. Rothrock, 97–116. London: Springer.
- Ruysschaert, D., A. Darsoyo, R. Zen, G. Gunung, and I. Singleton. 2011. Developing palm-oil production on degraded land—Technical, economic, biodiversity, climate and policy implications [online]. Accessed September 19, 2017, from <https://www.ifc.org/wps/wcm/connect/adf573004a682a88852cfd998895a12/BACP-PanEco.Developing-degradedland-report.pdf?MOD=AJPERES>.
- Schulze, J., B. Muller, J. Groeneveld, and V. Grimm. 2017. Agent-Based modelling of social-ecological systems: Achievement, challenges, and a way forward. *Journal of Artificial Societies and Social Simulation* 20: 8.
- Slik, J.W.F., S-I. Aiba, F.Q. Brearley, C.H. Cannon, O. Forshed, K. Kitayama, H. Nagamasu, R. Nilus, et al. 2010. Environmental correlates of tree biomass, basal area, wood specific gravity and stem density gradients in Borneo's tropical forests. *Global Ecology and Biogeography* 19: 50–60.
- Soares-Filho, B.S., D.C. Nepstad, L.M. Curran, G.C. Cerqueira, R.A. Garcia, C.A. Ramos, E. Voll, A. McDonald, et al. 2006. Modelling conservation in the Amazon basin. *Nature* 440: 520–523.
- Sodhi, N.S., B.W. Brook, and C.J.A. Bradshaw. 2007. *Tropical conservation biology*. Oxford: Blackwell.
- Symes, W.S., M. Rao, M.B. Mascia, and L.R. Carrasco. 2015. Why do we lose protected areas? Factors Influencing protected area downgrading, downsizing and degazettement in the tropics and subtropics. *Global Change Biology* 22: 656–665.
- Ulanowicz, R.E., S.J. Goerner, B. Lietaer, and R. Gomez. 2009. Quantifying sustainability: Resilience, efficiency and the return of information theory. *Ecological Complexity* 6: 27–36.
- UNDP (United Nations Development Program). 2015. Indonesia government addresses deforestation challenges in its aim to double palm oil production by 2020 [online]. Accessed February 19, 2018, from <http://www.undp.org/content/undp/en/home/presscenter/pressreleases/2015/03/11/indonesia-government-addresses-deforestation-challenges-in-its-aim-to-double-palm-oil-production-by-2020.html>.
- UNEP (United Nations Environment Program). 2011. Green Economy Report, UNEP, Nairobi [online]. Accessed January 24, 2018, from [www.unep.org/greeneconomy/greeneconomyreport/tabid/29846/default.aspx](http://www.unep.org/greeneconomy/greeneconomyreport/tabid/29846/default.aspx).
- USDA (United States Department of Agriculture). 2014. Indonesia palm oil exports by year [online]. Accessed January 12, 2018, from <http://www.indexmundi.com/agriculture/?country=id&commodity=palm-oil&graph=exports>.
- Verburg, P. 2006. Simulating feedbacks in land use and land cover change models. *Landscape Ecology* 21: 1171–1183.
- Wilensky, U. 1999. NetLogo [computer software]. Center for Connected Learning and Computer-Based Modelling. Northwestern University, Evanston, IL [online]. Accessed October 2017, from <http://ccl.northwestern.edu/netlogo>.
- Wilmar. 2017. Tropical oils plantations [online]. Accessed June 2017, from <http://www.wilmar-international.com/our-business/tropical-oils/plantations/harvesting-oil-palm-yield/>.
- World Bank. 2018. Data—terrestrial protected area (% of total land area)—Indonesia [online]. Accessed October 2019, from <https://data.worldbank.org/indicator/ER.LND.PTLD.ZS?locations=ID&view=chart>.
- Wunder, S., S. Engel, and S. Pagiola. 2008. Taking stock: A comparative analysis of payments for environmental services programs in developed and developing countries. *Ecological Economics* 65: 834–852.
- Zen, Z., C. Barlow, and R. Gondowarsito. 2005. Oil palm in Indonesian socioeconomic improvement. A review of options. Working Paper. Australian National University, Canberra, Australia.

**Publisher's Note** Springer Nature remains neutral with regard to jurisdictional claims in published maps and institutional affiliations.

## AUTHOR BIOGRAPHIES

**Julen Gonzalez-Redin** (✉) received his PhD in Sustainable Development in 2018 from the James Hutton Institute (Aberdeen, UK) and the University of Dundee (Dundee, UK). In 2016, he was a Visiting Researcher at the Commonwealth Scientific Industrial and Research Organisation (CSIRO), Cairns (Australia). He also received his M.Sc. in Sustainable Development from the University of St Andrews (UK) in 2014, and a B.Sc. in Environmental Sciences from the University of the Basque Country (Spain) in 2011. From 2011 to 2013, he worked as an Environmental Consultant at Enviro s.r.o. (Prague, Czech Republic). His research interests include areas in sustainability and computer sciences. Much of his environment-related work has been on improving the understanding of how socio-economic processes and dynamics impact on the natural capital and ecosystem services, mainly through the application of computer modelling. In computer science, he has worked on developing different computer models within Agent-Based Modelling, Bayesian Belief Networks, Geographic Information Systems, and other programming languages.  
Address: Information and Computation Sciences, James Hutton Institute, Craigiebuckler, Aberdeen AB15 8QH, Scotland, UK.  
e-mail: julengonzalezredin@gmail.com

**J. Gareth Polhill** did a degree in Artificial Intelligence and a PhD in Neural Networks before spending 18 months in industry as a professional programmer. Since 1997, he has been working at the The James Hutton Institute (formerly the Macaulay Land Use Research Institute) on agent-based modelling of human–natural systems, and has worked on various international and interdisciplinary projects using agent-based modelling to study agricultural systems, lifestyles, and transitions to more sustainable ways of living. His areas of interest include complex systems, social dilemmas, spatially explicit modelling, and best practice in agent-based modelling, programming, and design. He is also interested in the role of ontologies in formally describing and annotating simulation models and experiments.

*Address:* Information and Computation Sciences, James Hutton Institute, Craigiebuckler, Aberdeen AB15 8QH, Scotland, UK.  
e-mail: Gary.Polhill@hutton.ac.uk

**Terence P. Dawson** is the Professor of Global Environmental Change at King's College London since 2016, following an academic career at the Universities of Oxford, Edinburgh, Southampton and Dundee. His research interests focus on Complex Systems; Biogeography; Evaluating environmental change and anthropogenic impacts on landscapes, biodiversity, natural resources, food security, and ecosystem services. Terence is a Fellow of the Royal Geographical Society and has published over 200 scientific manuscripts to date.

*Address:* Department of Geography, King's College London, Strand, London, England, UK.  
e-mail: terry.dawson@kcl.ac.uk

**Rosemary Hill** is an internationally recognized expert in the science of ecosystem governance and multiple knowledge systems for sustainability, including biodiversity futures, climate change adaptation, and how indigenous knowledge can inform resilience. She is a Senior Principal Research Scientist with Australia's national science agency

CSIRO, and an adjunct associate professor with James Cook University. Ro is a member of the IUCN Commission on Environment Economic and Social Policy, the World Commission on Protected Areas.

*Address:* Land and Water, Commonwealth Scientific and Industrial Research Organisation (CSIRO), Cairns, QLD, Australia.

*Address:* Division of Tropical Environments and Societies, James Cook University, Townsville, QLD, Australia.  
e-mail: Ro.Hill@csiro.au

**Iain J. Gordon** is an Honorary Fellow of the Fenner School of Environment and Society at the Australian National University. Immediately prior to his resignation in late 2019, he was Deputy Vice Chancellor (Division of Tropical Environments and Societies) at James Cook University bringing a passion and commitment for sustainable regional development and harnessing the tropics' enormous potential through education and research. He has previously led the James Hutton Institute (Scotland), focusing on evidence-based solutions for the use of land for agriculture while maintaining natural resources and ecosystems. He has also worked for CSIRO from 2003 – 2010, where he led the Water for a Healthy Country GBR node on grazing land management and worked with a wide range of stakeholders (agricultural peak bodies, QDPI and NRM bodies) to deliver innovative solutions in support of improved water quality flowing from the catchments into the lagoon of the Great Barrier Reef.

*Address:* Information and Computation Sciences, James Hutton Institute, Craigiebuckler, Aberdeen AB15 8QH, Scotland, UK.

*Address:* Division of Tropical Environments and Societies, James Cook University, Townsville, QLD, Australia.

*Address:* Fenner School of Environment & Society, Australian National University, Canberra, ACT, Australia.  
e-mail: Iain.Gordon@anu.edu.au

Reproduced with permission of copyright owner. Further reproduction prohibited without permission.